

## SON SALLE WELDENS

Micros dynamiques 3x SM58  
2x AKG D5  
3x SM 57

1x Microphones Beyerdynamic M201N 1x E609  
1x beyerdynamic TG58  
1x BD 300 Tbone

Micros statiques  
2x Microphones Audio Technica ATM450

Boitiers Direct Input 2x DI BSS AR116  
2x DI palmer 02 mono 2x DI palmer 04 Stereo

Pieds  
4x grands perchette

2x grands  
3x petits perchette (2 en attente) 1x petit embase lourde  
1x petits embase pliable

Diffusion  
Console Behringer X32 producer  
Façade : 2x Yamaha DBR 12  
Retours : 4x LD System mon101  
Plateau : Patch Analogique 24/8 (16in max) lointain cour + Sspatch éclaté 8 in

## LUMIERE

Ordinateur Mac Mini

Logiciel Dlight

Controleur Panorama P1

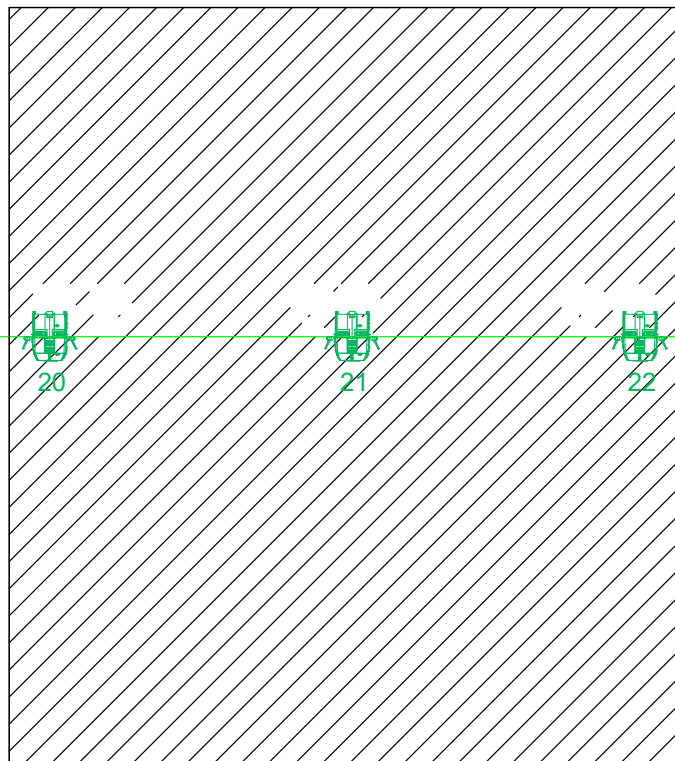
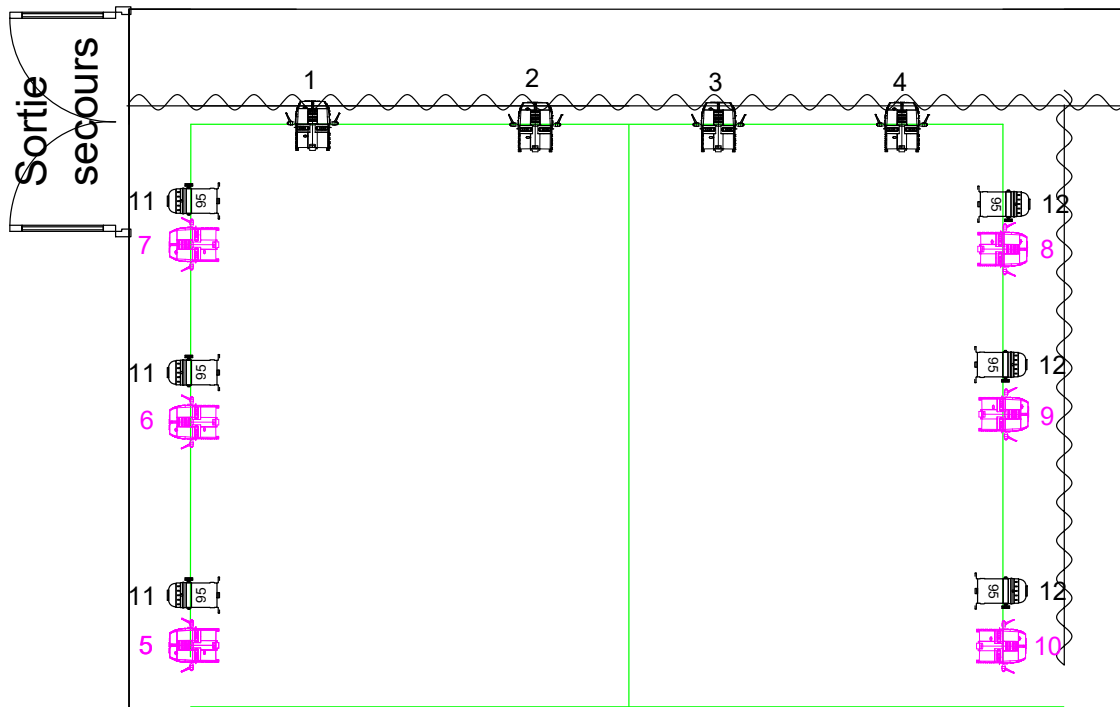
Routeur wifi


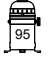




Voir plan joint

## Stockage

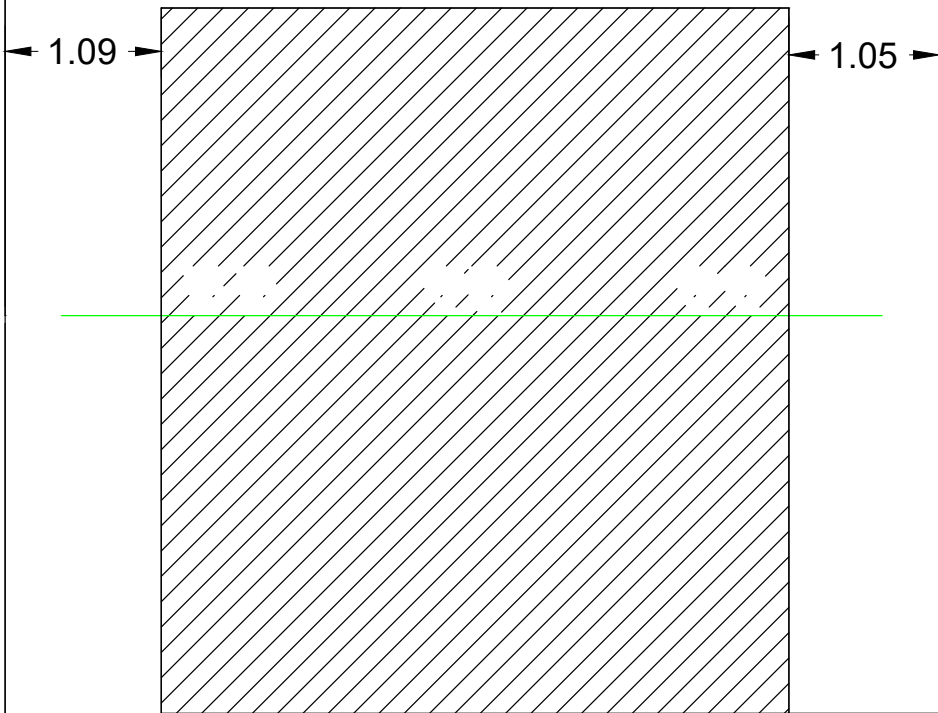
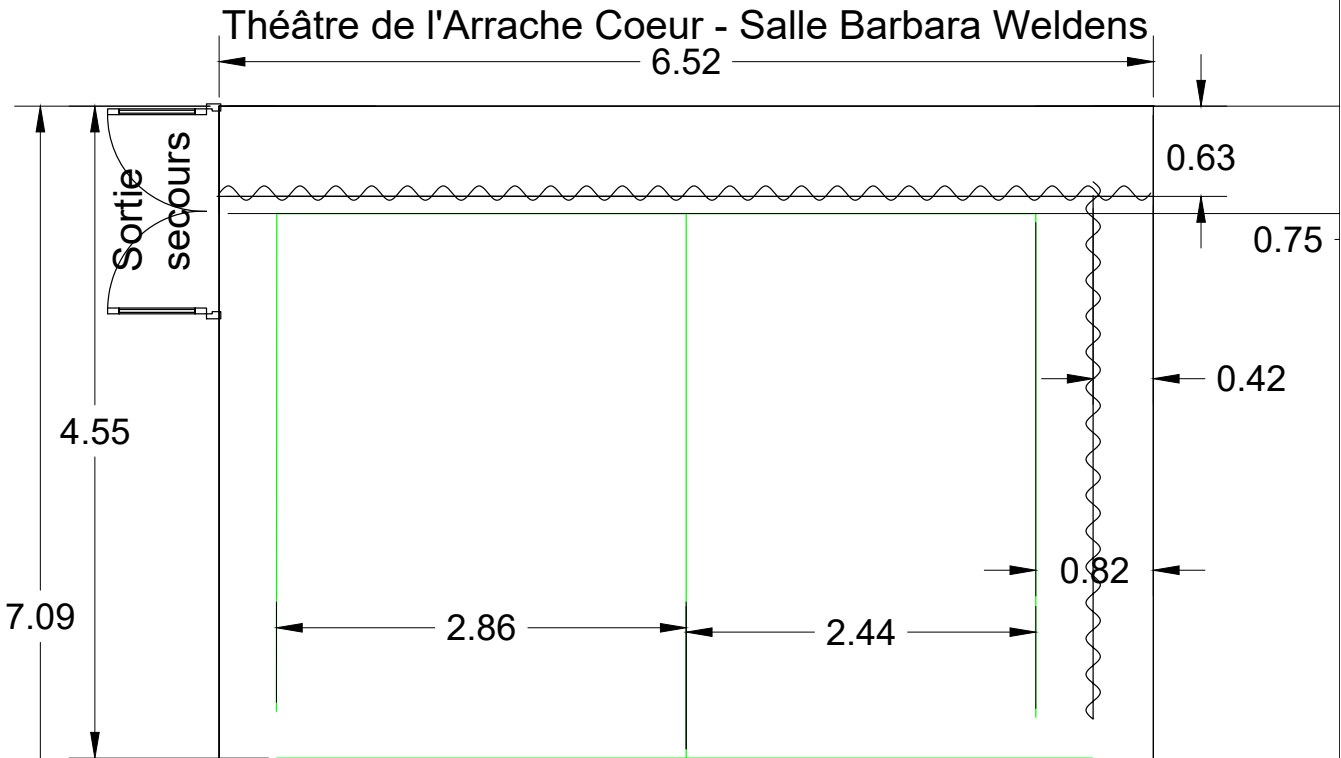
Un espace de stockage dédié est à la disposition des équipes artistique est situé entre la scène et la loge.

# Théâtre de l'Arrache Coeur - Salle Barbara Weldens

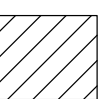


					
Entrée	Par led RGBW 18x12w	Par 56 CP95	Par led RGBW 8 x 5W	Par led RGBW 7X15W Pan Tilt Zoom	Régie
	Gradin				
Perche lumiere tube 30mm					

Cotes en Mètre



Entrée     Régie

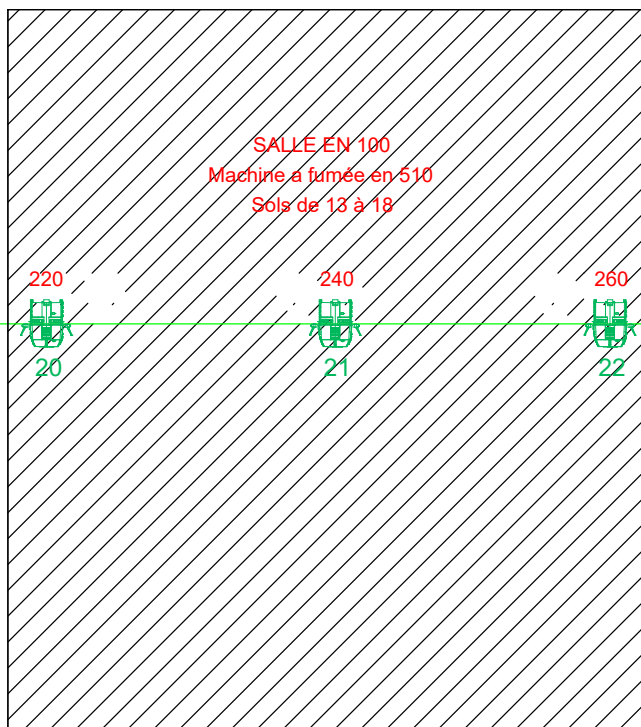
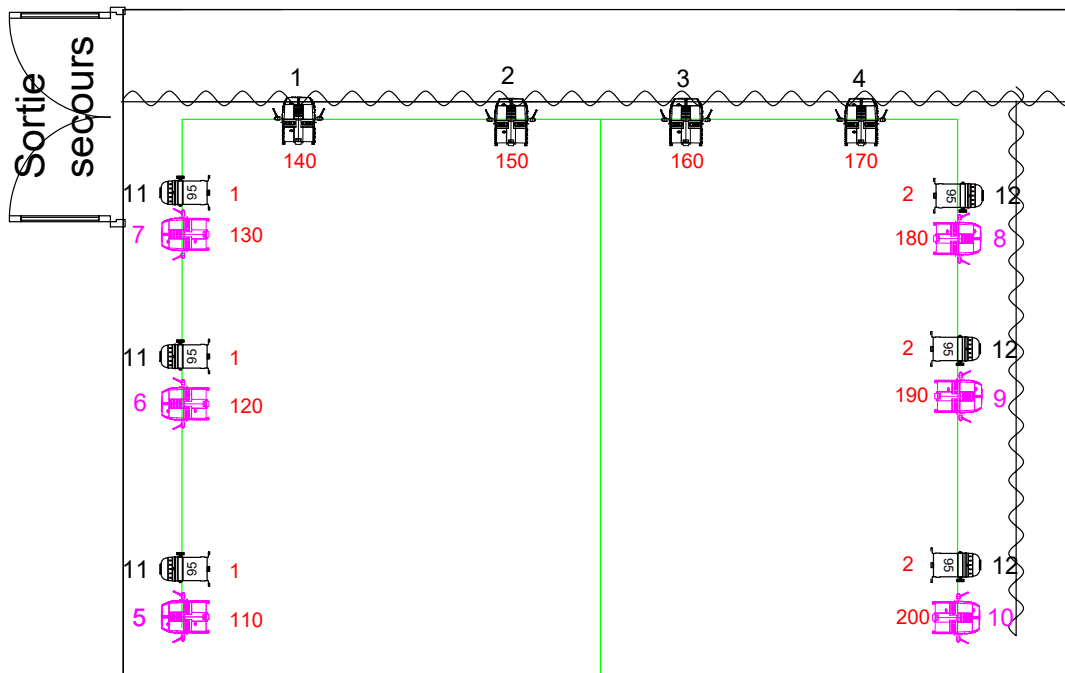
 Par led RGBW 18x12w  
 Par 56 CP95  
 Par led RGBW 8 x 5W  
 Par led RGBW 7X15W Pan Tilt Zoom

Gradin

Perche lumiere tube 30mm

numero ligne dmx en rouge

Théâtre de l'Arrache Coeur - Salle Barbara Weldens



Entrée



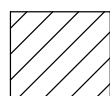
Régie

Par led  
RGBW  
18x12w

Par 56  
CP95

Par led  
RGBW  
8 x 5W

Par led  
RGBW  
7X15W  
Pan Tilt  
Zoom



Gradin

Perche lumiere tube 30mm

COUPE  
Théâtre de l'Arrache Coeur - Salle Barbara Weldens

