

SON SALLE ALIZE

Micros dynamiques 4x SM58
3x SM 57

2 senheiser E609

1x beyerdynamic TG58
1x BD 300 Tbone

Micros statiques 2x RODE M5 MP

4x DI palmer 02 mono

2x DI palmer 04 Stereo

Pieds
7x grands pieds perchette

4 x Petits pieds perchette

1x pied grosse caisse

Diffusion

Console Behringer X 32 producer

Système Adamson 4 têtes LX 10 300 Watts RMS

2 caissons de basses 400 watts RMS

Retours : 4x LD System mon101

SD16 Behringer 16i/8o + 3 x Sous patch boitier 6 in

LUMIERE

Ordinateur Mac Mini

Logiciel Dlight ;

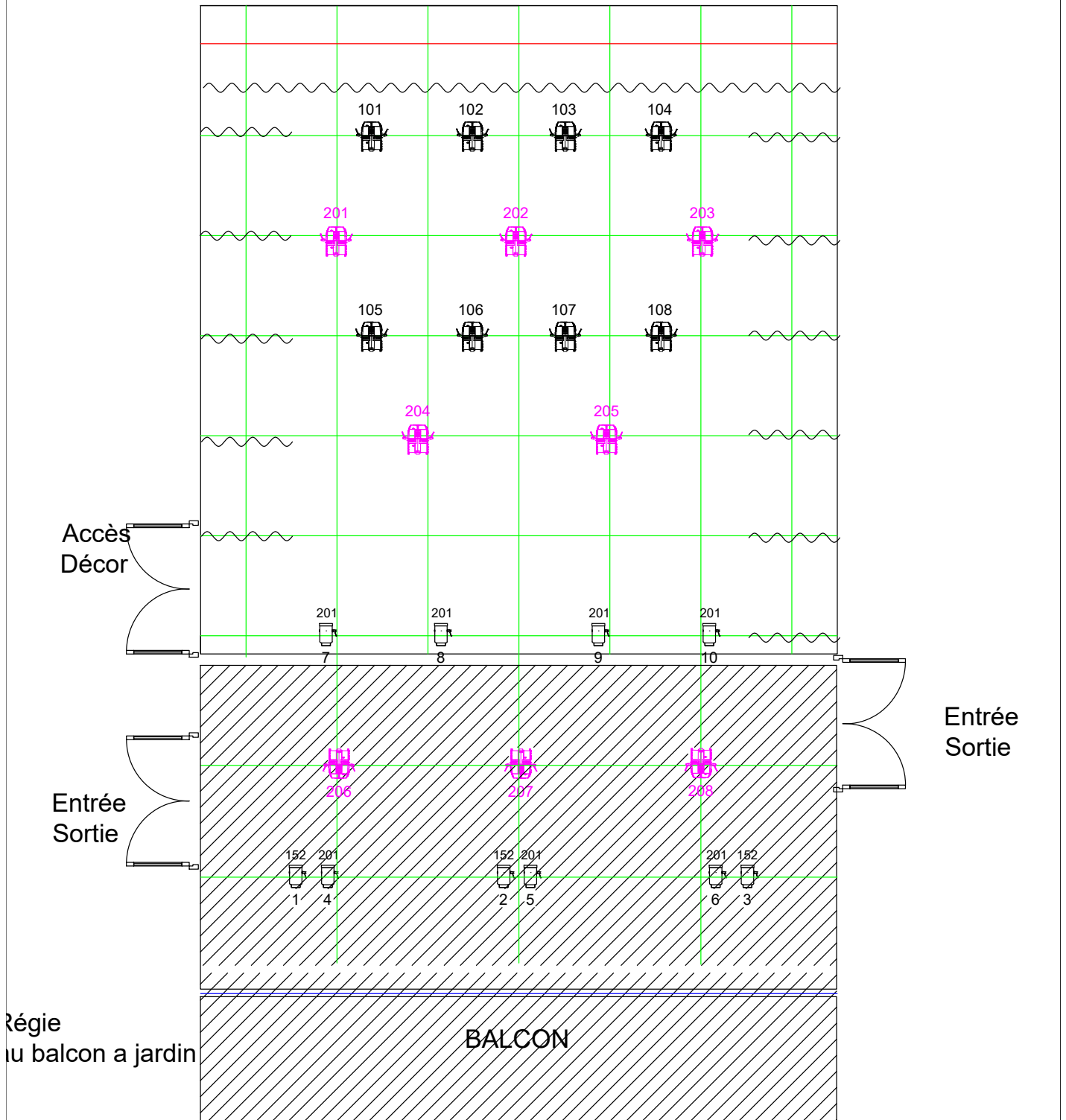
Contrôleur Panorama P1

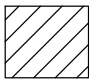



Voir plan joint

STOCKAGE

L'espace de stockage dédié aux compagnies est accolé à la scène côté jardin

Théâtre de l'Arrache Coeur - Salle ALIZE



- | | | | |
|---|---|---|---|
|  |  |  |  |
| Gradin | Par led
RGBWA
18x10w | Varytech
RGBW
3 x 40w
hero wash | Pc 1Kw |

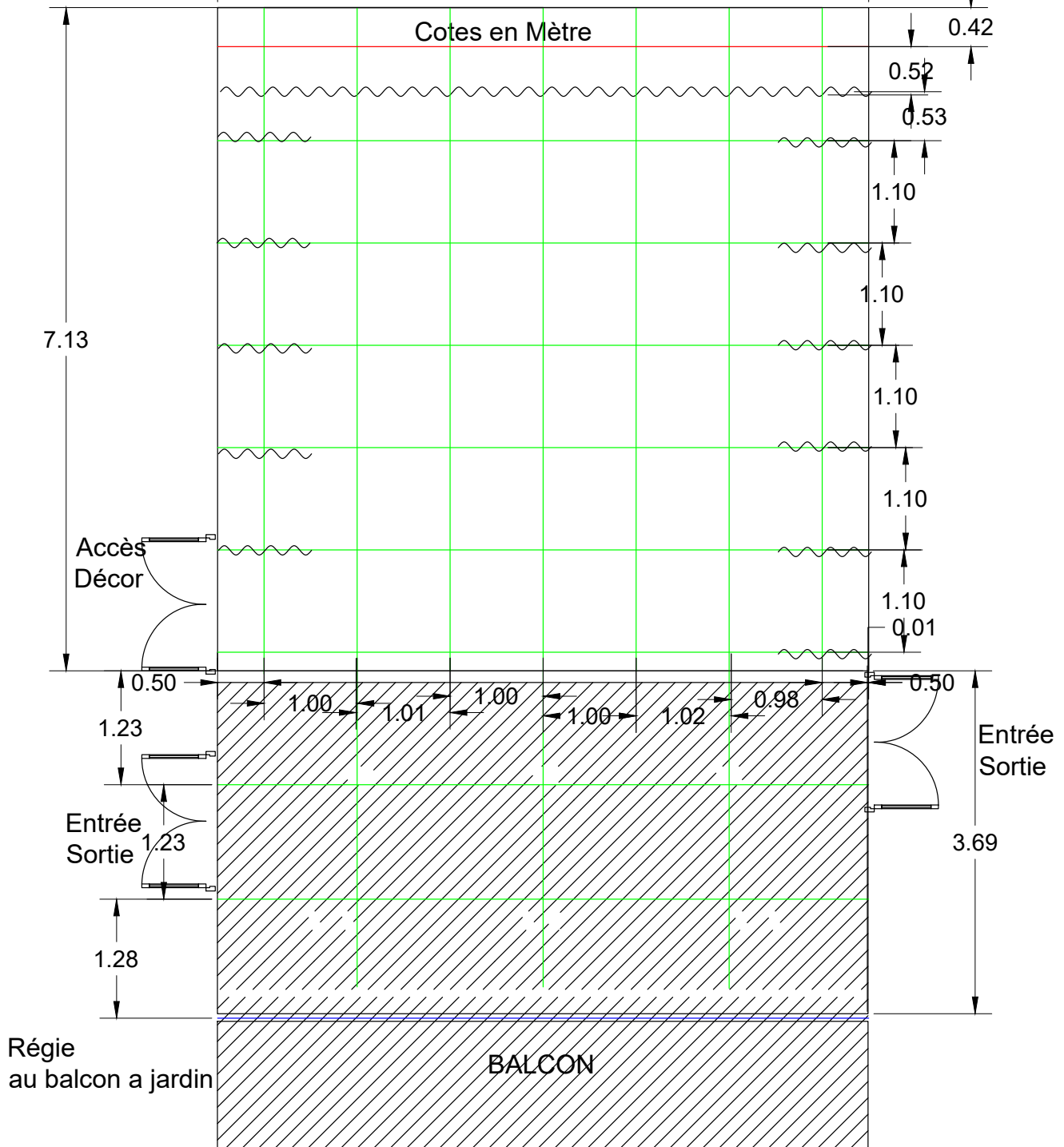
Perche Basse Balcon

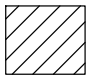



Perche FIXE tube 50mm

Perche Cyclo sur poulie

7.00
Théâtre de l'Arrache Coeur - Salle ALIZE

Cotes en Mètre



- | | | | |
|---|---|---|---|
|  |  |  |  |
| Gratin | Par led
RGBWA
18x10w | Varytech
RGBW
3 x 40w
hero wash | Pc 1Kw |

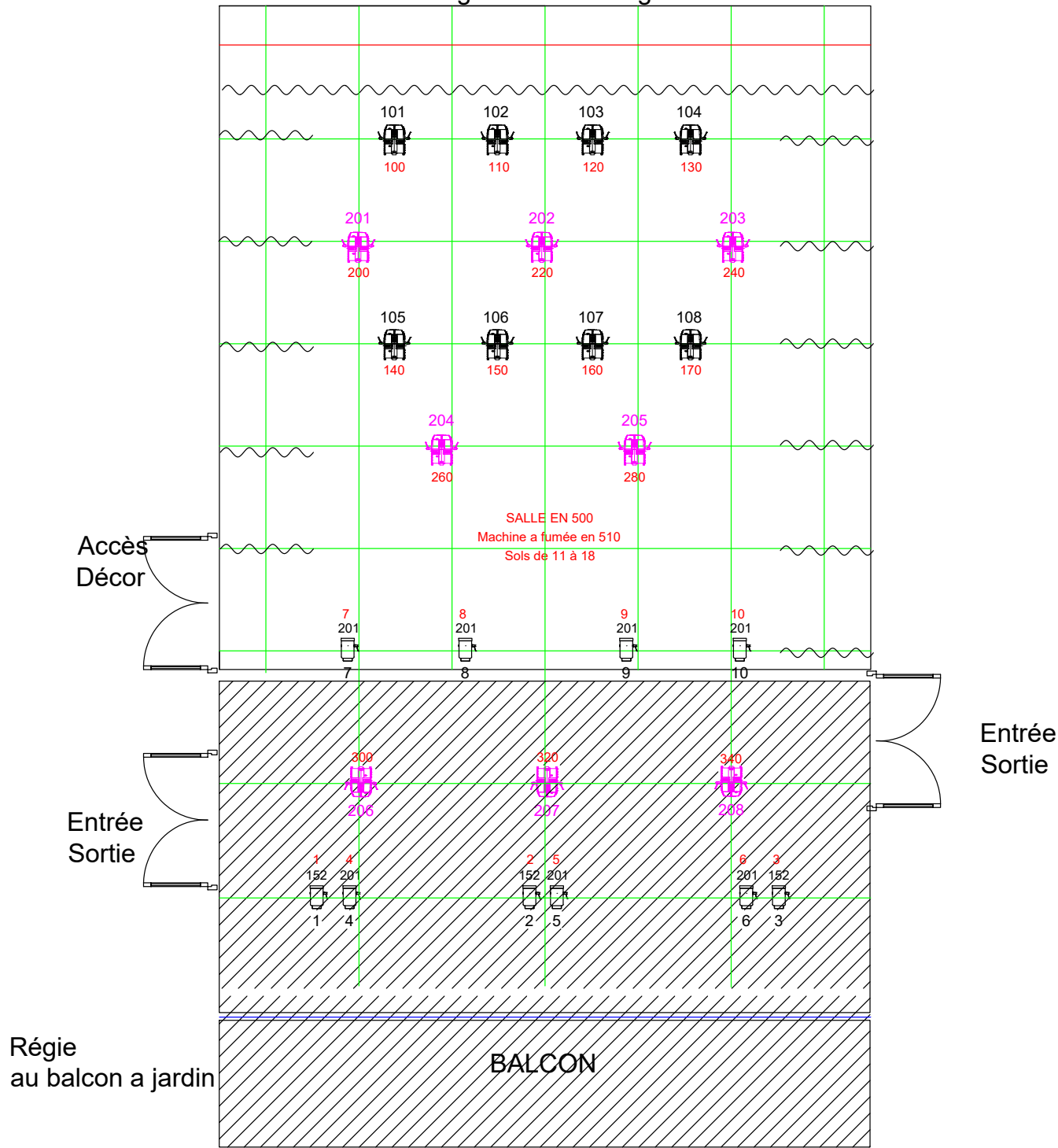
Perche Basse Balcon

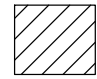



Perche FIXE tube 50mm

Perche Cyclo sur poulie

Théâtre de l'Arrache Coeur - Salle ALIZE

numero ligne dmx en rouge



- | | | | |
|---|---|---|--|
|  |  |  |  |
| Gradin | Par led
RGBWA
18x10w | Varytech
RGBW
3 x 40w
hero wash | Pc 1Kw |

Perche Basse Balcon

Perche FIXE tube 50mm

Perche Cyclo sur poulie

COUPE
Théâtre de l'Arrache Coeur - Salle ALIZE

